

ASSURED AUTOMATION

Automated & Manual Valves

- *Ball Valves*
- *Angle Seat Valves*
- *Butterfly Valves*
- *Plug Valves*
- *Multi-port Valves*
- *VA Series "Valve + Actuator"*
- *Actuators*
- *Solenoid Valves*
- *Limit Switches*



assuredautomation.com

1-800-899-0553

VA Series Valve + Actuator

3/8" to 2"



VA Series "valve+actuator" combines an on/off valve and pneumatic actuator into a single, compact body.

MAJOR BENEFITS

Duty cycle laboratory tested on clean services to one million cycles, compact size, competitive price, high flow rate, Integral NAMUR solenoid mounting pad.

Material: Brass Body (Nickel Plated) and Trim

Seats & Seals: BUNA, VITON, EPDM

Max. Pressure: 225 psig, Vacuum 740mm HG

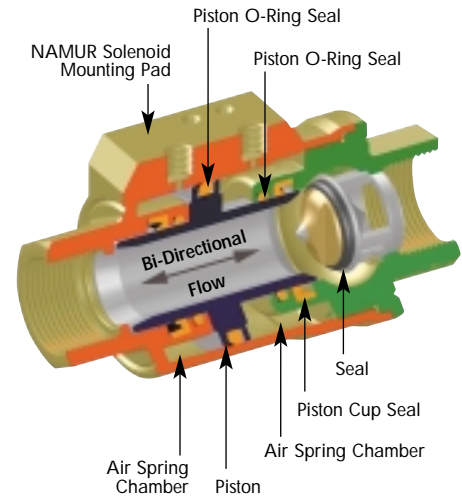
Temperature Range: BUNA: -4°F to 176°F
VITON: -4°F to 302°F
EPDM: -4°F to 302°F

Actuator Pressure: 40 psig to 125 psig double acting
60 to 125 psig spring return

Actuator Styles: NC, NO, DA

End Connections: NPT (metric threads available)

VA Series Cv Chart (Flow Coefficient)							
Size	3/8"	1/2"	3/4"	1"	1-1/4"	1-1/2"	2"
Cv	8	10	13	17	28	57	81



ARES/ZEUS Angle Seat Valve

3/8" to 2"



MAJOR BENEFITS

Duty cycle up to five million cycles, superior angle valve flow rate, competitive price, pneumatic actuator with integral NAMUR solenoid mounting pad.

Material: ARES - 316SS Body, Stem and Plug
ZEUS - Bronze Body, 316SS Stem & Plug

Seats & Seals: PTFE

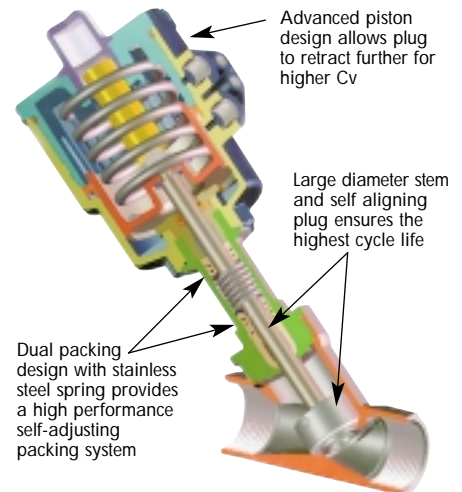
Max. Pressure: 230 psig; Steam to 150 psig

Temperature Range: -14°F to 358°F

Actuator Styles: NC, NO, DA

End Connections: NPT, Sanitary Clamp, BW, Flanged

ARES Cv Chart (Flow Coefficient)							
Size	3/8"	1/2"	3/4"	1"	1-1/4"	1-1/2"	2"
Cv	6	7	12	23	33	54	78



36 Series 3-Piece Ball Valve

1/4" to 2" (Full Port)



MAJOR BENEFITS

Live loaded packing/stem design ensures higher duty cycle, competitive price, direct mount actuators.

Material: 316SS Body, Ball and Stem

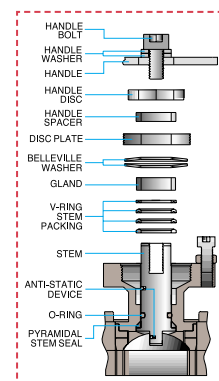
Seats & Seals: PTFE or RPTFE (others available)

Max. Pressure: 1000 psig

Max. Temperature: 380°F;
Direct mount actuators limited to 250°F

Actuator Styles: Pneumatic NC, NO, DA;
Electric (weatherproof and explosion proof);
Manual Handles

End Connections: NPT, SW, Sanitary Clamp



36 Series Cv Chart (Flow Coefficient)							
Size	1/4" & 3/8"	1/2"	3/4"	1"	1-1/4"	1-1/2"	2"
Cv	13	23	70	116	151	197	325
Cv [T-Clamp]	—	13	23	88	116	168	290

101 Series Brass Ball Valve

3/8" to 2" (Full Port)



Material:
Brass Body, Ball and Stem

Seats & Seals: PTFE

Max. Pressure: 530 psig

Max. Temperature: 300°F;
Direct mount actuators limited to 250°F

Actuator Styles:
Pneumatic NC, NO, DA;
Electric (weatherproof and explosion proof);
Manual Handles

End Connections: NPT

26 Series 2-Piece Ball Valve

3/8" to 2" (Full Port)



Material:
316SS Body, Ball and Stem

Seats & Seals: PTFE

Max. Pressure: 1500 psig

Max. Temperature: 400°F;
Direct mount actuators limited to 250°F

Actuator Styles:
Pneumatic NC, NO, DA;
Electric (NEMA 4, explosion proof);
Manual Lever

End Connections: NPT

F15D Series Flanged 2-Piece Ball Valve

1/2" to 6"



Material:
316SS Body, Ball and Stem

Seats & Seals: PTFE

Max. Pressure: 275 psig

Max. Temperature: 400°F;
Direct mount actuators limited to 250°F

Actuator Styles:
Pneumatic NC, NO, DA;
Electric (weatherproof and explosion proof);
Manual Handles

End Connections:
150# Flanged

31/33 Series 3-Way Ball Valve

1/2" to 2"



Material: Brass or 316SS

Seats & Seals: PTFE

Max. Pressure: 2000 psig (33 series)
400 psig (31 series)

Max. Temperature: 400°F;
Direct mount actuators limited to 250°F

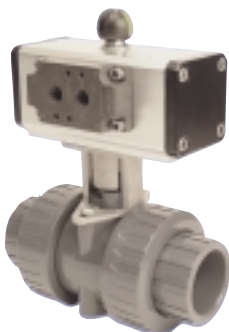
Actuator Styles:
Pneumatic NC, NO, DA;
Electric (NEMA 4, explosion proof);
Manual Lever

End Connections: NPT

Options: 4/5 Way, Flanged

PBP/PBC Series PVC True Union Ball Valve

1/2" to 4" (Full Port)



Material: PVC, CPVC

Seats & Seals: PTFE

Max. Pressure: 150 psig

Max. Temperature: 200°F;

Actuator Styles:
Pneumatic NC, NO, DA;
Electric (weatherproof and explosion proof);
Manual Handles

End Connections:
SW, NPT, Flanged

BW/BL Series Resilient Seat Butterfly

2" to 12"



Body Material: Ductile Iron

Discs: Bronze/Ni Plated, 316SS

Seats: BUNA, EPDM

Max. Pressure: 200 psig

Max. Temperature: 275°F;
Direct mount actuators limited to 250°F

Actuator Styles:
Pneumatic NC, NO, DA;
Electric (weatherproof and explosion proof);
Manual Handles

End Connections: Wafer or Lug

067 Series Non-Lubricated Plug Valve

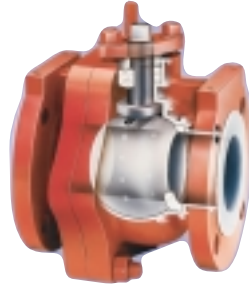
1/2" to 4"



Material: 316SS
Seats & Seals: PTFE
Max. Pressure: 275 psig
Max. Temperature: 400°F;
 Direct mount actuators
 limited to 250°F
Actuator Styles:
 Pneumatic NC, NO, DA;
 Electric (weatherproof and
 explosion proof);
 Manual Handles
End Connections: 150# RF Flange

TEFLON™ Lined 911 Series (Ball); 061 Series (Plug); 008/009 Series (Butterfly)

1/2" to 12"



Material: Ductile Iron Epoxy Coated
Lining: PFA Teflon
Seats & Seals: PTFE Teflon
Max. Pressure: 275 psig
Max. Temperature: 400°F;
 Direct mount actuators
 limited to 250°F
Actuator Styles:
 Pneumatic NC, NO, DA;
 Electric (NEMA 4, explosion proof);
 Manual Lever
End Connections:
 150# Flanged (Ball, Plug)
 Wafer/Lug (Butterfly)

Valve Accessories



- Limit Switches
- Solenoids
- Positioners
- Manual Overrides
- AS-I, Devicenet, Profibus,
Foundation Fieldbus Equipment

Specials

- 1 Manual Valves with Limit Switches
- 2 Flowmeters/Batch Control Systems
- 3 Automated Tees



New! FireChek® FC4 Heat-Activated Pneumatic Shut-off Valve



Dramatically improved protection
 compared with conventional
 plastic tubing burn-through!

...Safe, Simple, Smart.

- Rapidly responds to heat, **NOT** flames
- Vents actuator air pressure
- Closes actuator air supply line
- Easy to test and reset
- Compatible with ALL pneumatic actuators
- Easily retrofit, installs in minutes

Teflon is a registered trademark of DuPont Corporation

Call TOLL FREE: **1-800-899-0553**
 or Visit Us on the Web: **assuredautomation.com**

ASSURED AUTOMATION

19 Walnut Avenue, Clark, NJ 07066
Email: info@assuredautomation.com
Fax: 732-381-2328

Distributed by: